

ELGIN MILLS ROAD AND CN RAIL CROSSING GRADE SEPARATION LANDSCAPE RENDERING

LGL

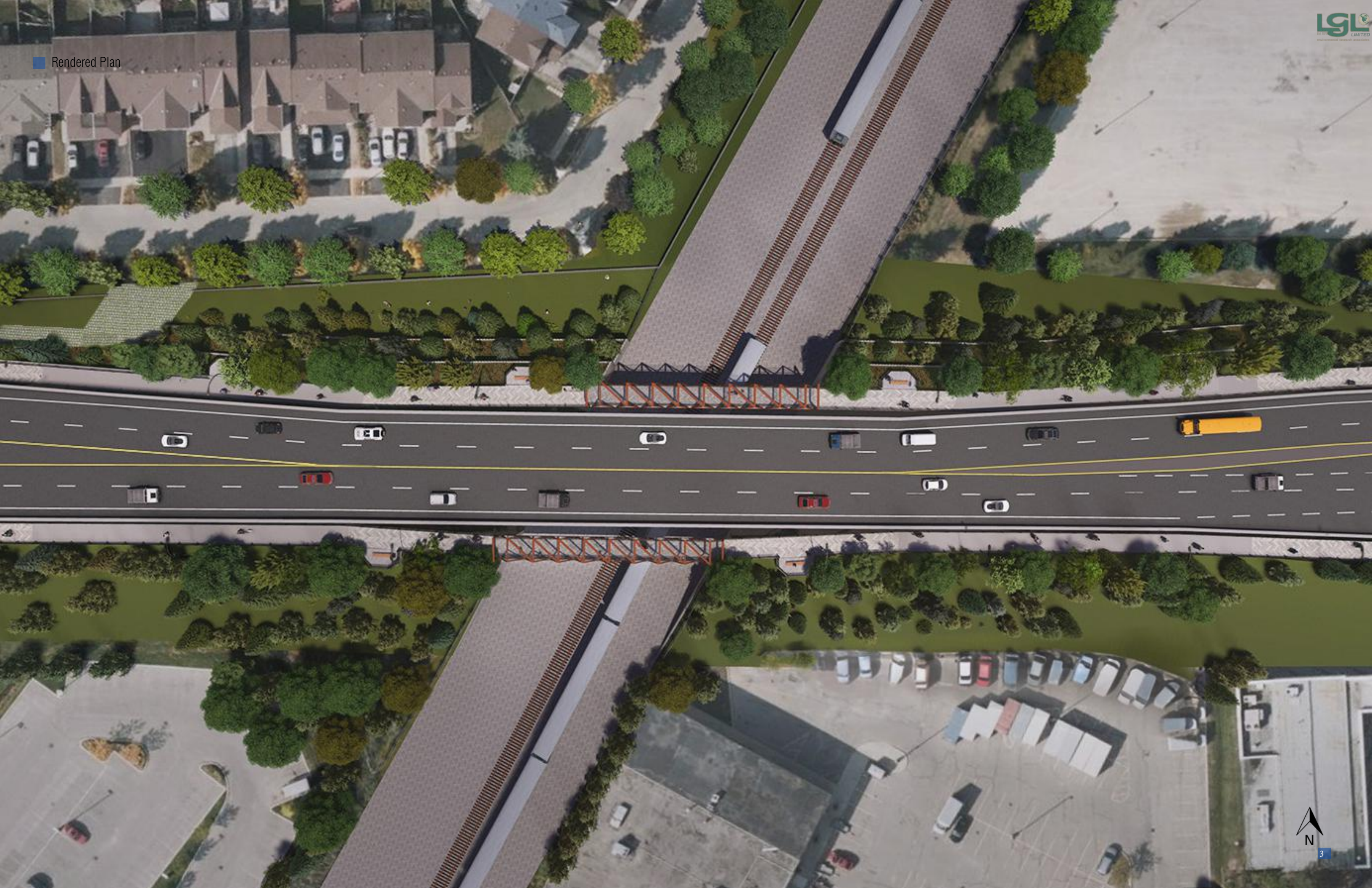
February, 2024



TABLE OF CONTENTS

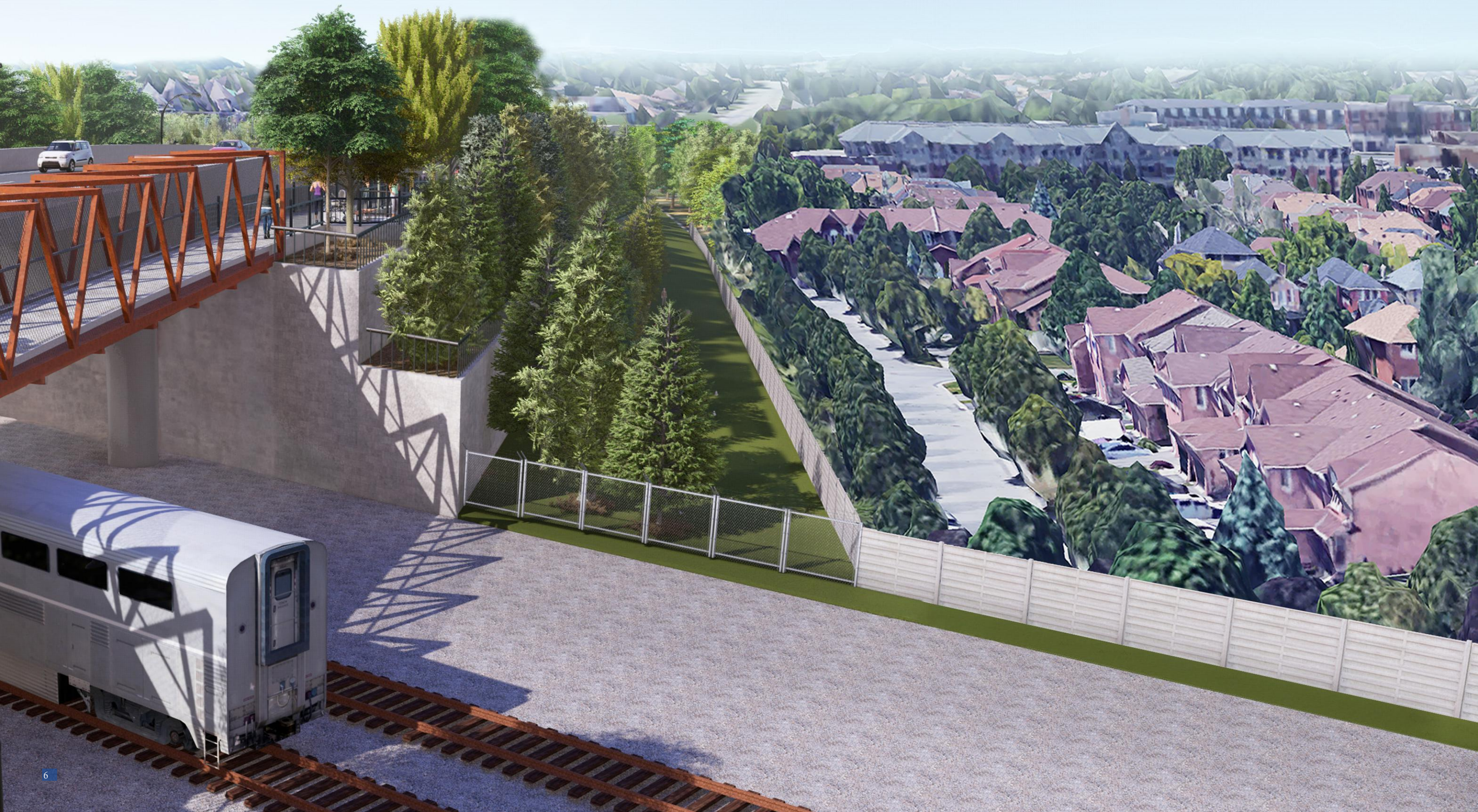
- RENDERED PLAN
- VIEWS
 - *View Looking Northwest, Southside of Crossing*
 - *Bird's Eye View Looking West, Southside of Crossing*
 - *View Looking West, Northside of Crossing*
 - *View Looking South from Neighborhood, Northside of Crossing*
 - *View Looking East on Multi-Use Pathway*
 - *Traffic View Approaching Grade Separation, Eastbound Lanes*
 - *View Looking East, Southside of Crossing*
 - *Lookout, Northside of Crossing*
- NORTHSIDE TERRACE SOIL VOLUME & TREE QUANTITY

Rendered Plan











■ View Looking South from Neighborhood
Northside of Crossing



Traffic View Approaching Grade Separation
Eastbound Lanes







■ NORTHSIDE SOIL VOLUME & TREE QUANTITY



Elgin Mills EA LANDSCAPE SOIL VOLUME AND TREE QUANTITY				
Overview				
· Terrace total area: 1076.6 m ²				
· Total Soil Volume: 1722.6 m ³				
· Total Tree Quantity: 68				
North Side Terrace	Area (m2)*	Soil Volume (m3)	Tree Quantity	Tree Type
NW1 (Top)	258.8	414.1	16	deciduous
NW2 (Lower)	280.1	448.2	18	evergreen, decidous
NE1 (Top)	268.9	430.2	17	decidous
NE2 (Lower)	268.8	430.1	17	evergreen, decidous
Total	1076.6	1722.6	68	
* Note: The area of the terrace does not include the area of the retaining wall.				
Terrace total area: 1076.6 m ² (300mm retaining wall area not included)				
Soil Volume: 1076.6 x 1.6 = 1722.6 m ³				
Tree Quantity: [1722.6/ (20*2+10)] *2≈ 68 trees				